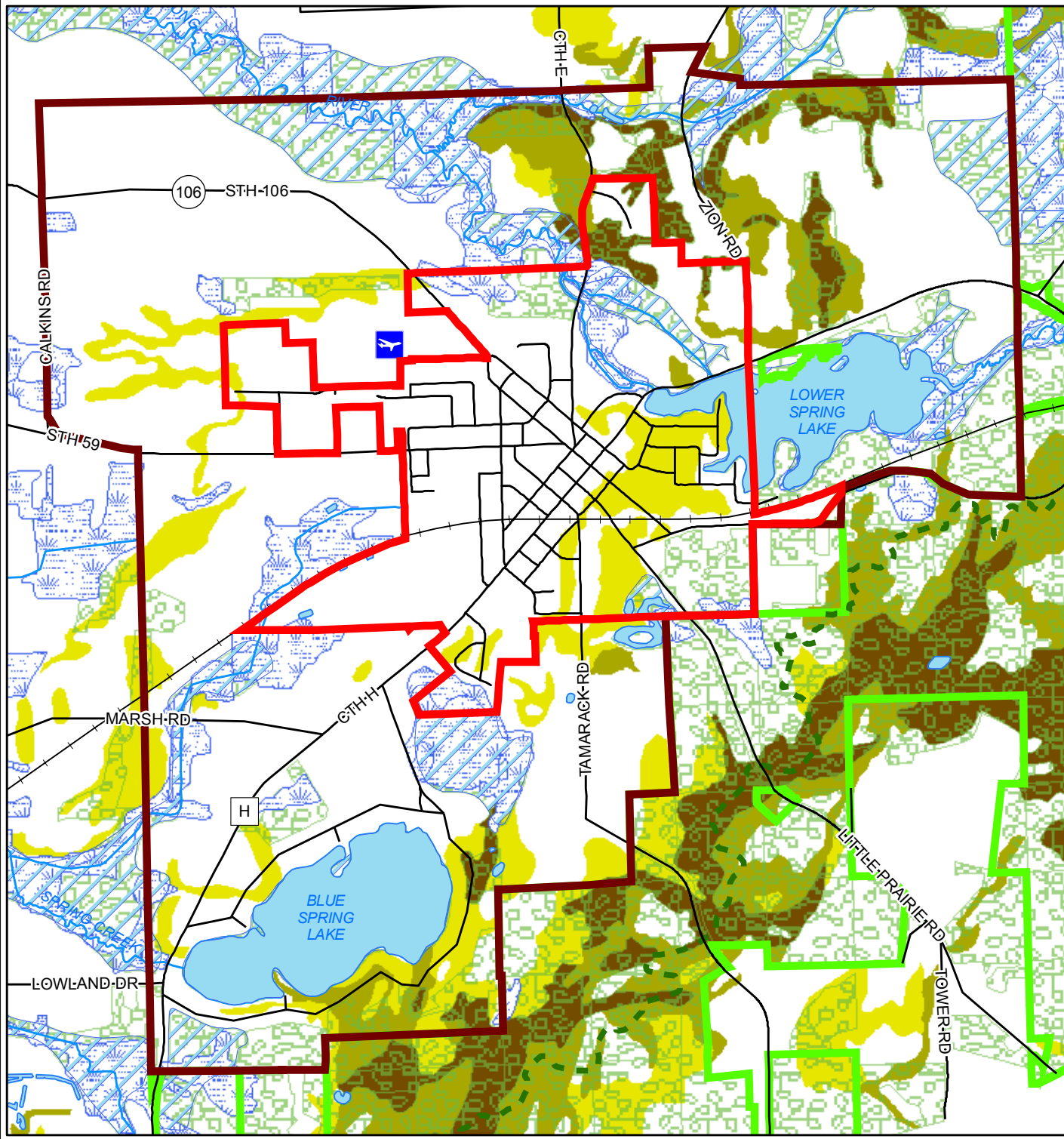


Village of Palmyra Jefferson County, WI Environmental Corridors Map

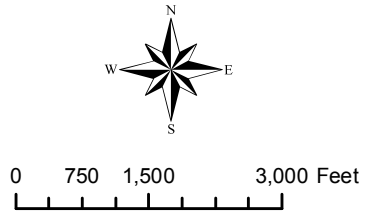


Legend

- Village of Palmyra
- 20-Year Urban Service Area
- Railroad
- Roads
- Ice Age Trail
- Kettle Moraine State Forest
- Open Water
- Streams
- Floodplain
- Wetland
- Woodlands > 10 Acres

Steep Slopes

- 20-45
- 12-20
- 6-20



- Sources:
- Base map data provided by Jefferson County.
 - 20 year Urban Service Area data provided by Jefferson County.
 - Floodplains provided by Jefferson County.
 - Wetlands provided by WIDNR
 - Steep Slopes provided by NRCS

Drafted: ADB
 Date: 04-21-10
 Data: Provided by Jefferson Co. LIO
 File: /384/palmyra/CORP/Parks_EnvCor.mxd

