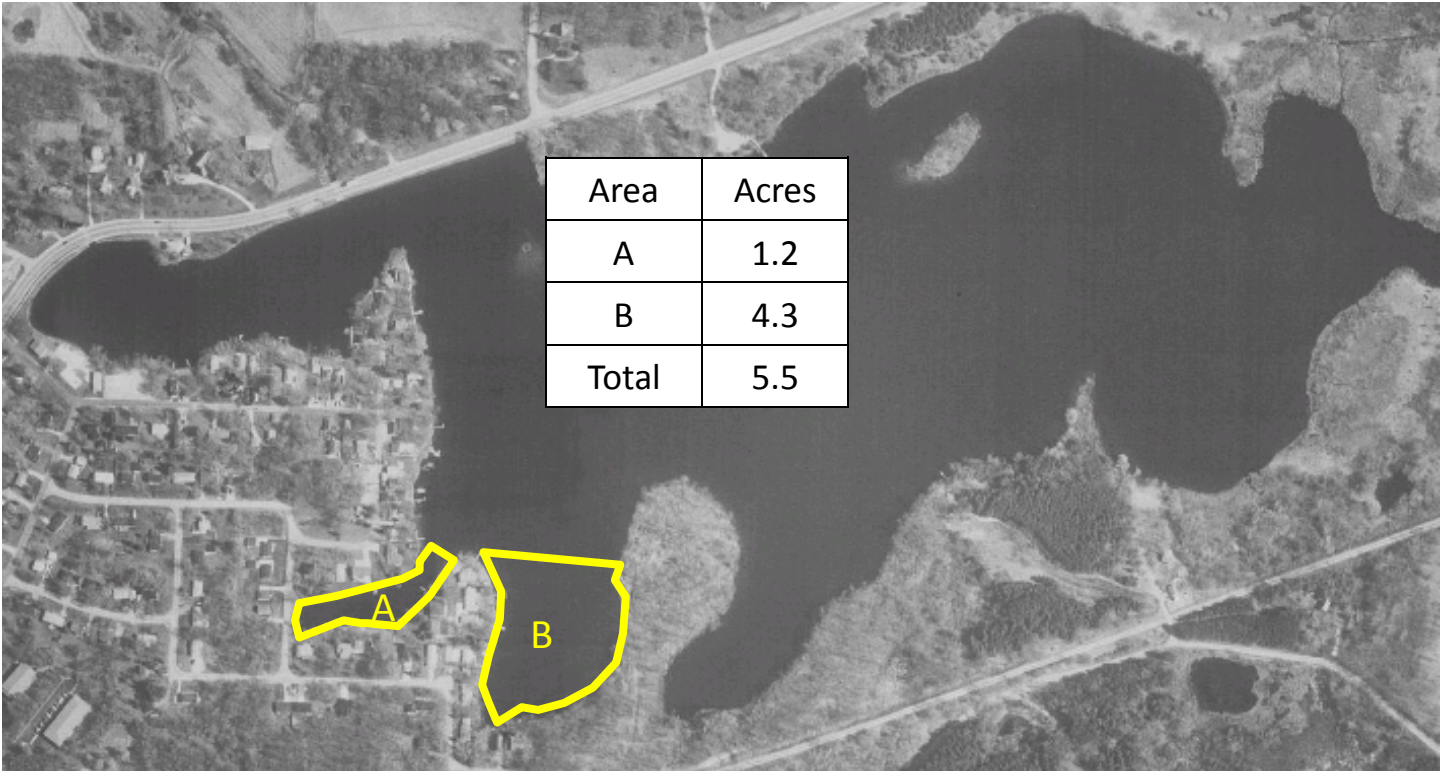


Lower Spring Lake—Jefferson County, WI
 2018 Proposed Treatment Map
 Eurasian Watermilfoil and/or Curlyleaf Pondweed (as needed)



Proposed Treatment Plan for 2018

Eurasian Watermilfoil: Maximum 5.5 acres/3' avg. with liquid 2,4-D* at 3.0 ppm

Curlyleaf Pondweed: Maximum 5.5 acres/3 ft. avg. with Aquathol-K at 1.0 ppm

* Liquid 2,4-D Herbicide to be used: DMA4-IVM, Weedar 64, CleanAmine or Platoon according to cost/availability

Theoretical Lake Wide Concentrations (Assumes equal Mixing of Herbicides)
 Based on Lake Volume of 297 acre-ft.

Product	Dose (gal)	Lake Volume (acre-ft.)	Rate (gal/acre-ft)	Concentration (ppm)
2,4-D	35.0	297.0	0.118	0.166
Aquathol-K	10	297.0	0.034	0.056*